



ANTIBACTERIAL DRESSING

MEDIHONEY[®]

with Active *Leptospermum* Honey



BARRIER CREAM



30%

OF THIS PRODUCT IS
**100% ANTIBACTERIAL
MANUKA HONEY**



*Healing
is Believing*

OVERVIEW

Medihoney barrier cream contains only natural products with the addition of 30% active 100% Pure Medical Grade Manuka Honey.

FEATURES AND BENEFITS

- The pH of the barrier cream helps maintain the skin's acid mantle reducing the risk of skin breakdown
- A totally natural product with 100% pure medical grade Manuka honey added. Contains no parabens, mineral oils or lanolin
- The 30% Manuka honey delivers broad spectrum antimicrobial activity
- Has both anti candida and anti fungal performance
- Provides a dry to touch layer which helps protect skin from damage caused by friction and shear, allowing adhesive dressings to be used effectively
- Is quick drying allowing the skin to remain breathable, preventing maceration
- Is safe to be used on all ages including paediatrics and neonates
- Helps prevent damage to skin caused by frequent washing. Medihoney barrier cream does not need to be washed prior to further applications
- Available in 2g sachet to meet hospital infection control protocols and 50g tube for community use

INDICATIONS

- Protects at risk skin from breakdown associated with incontinence. Can be used under incontinence pads
- Can be used around wound edges to protect skin from irritation and breakdown caused by wound exudate
- Suitable for injured skin or areas that are inflamed or excoriated
- Suitable for all ages including paediatrics and neonates





ANTIBACTERIAL DRESSING
MEDIHONEY[®]
with Active *Leptospermum* Honey



BARRIER CREAM



Product Code	Product Description	Size	Qty/Box
582	Barrier Cream	50g	1
800	Barrier Cream Sachets	2g	20

SKIN EXCORIATION AND MOISTURE LESIONS

A 67 year old lady presented to A&E with extensive skin excoriation and skin breakdown. Medihoney was applied 3 times per day for the first 3 days then once per day. The use of the Medihoney Barrier cream with its 30% Manuka honey provided both antibacterial and anti fungal protection and resulted in significant improvement to the skin within 3 days

AXILLA WOUND



Initial assessment upon admission



Day 3

INFERIOR BREAST WOUND



Initial assessment upon admission

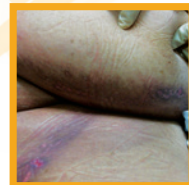


Day 3

GROIN WOUND



Initial assessment upon admission



Day 3